

MONTHLY MEMBERSHIP PROGRESS REPORT

District 325 S

Results as of: 3/31/2026

GMT:

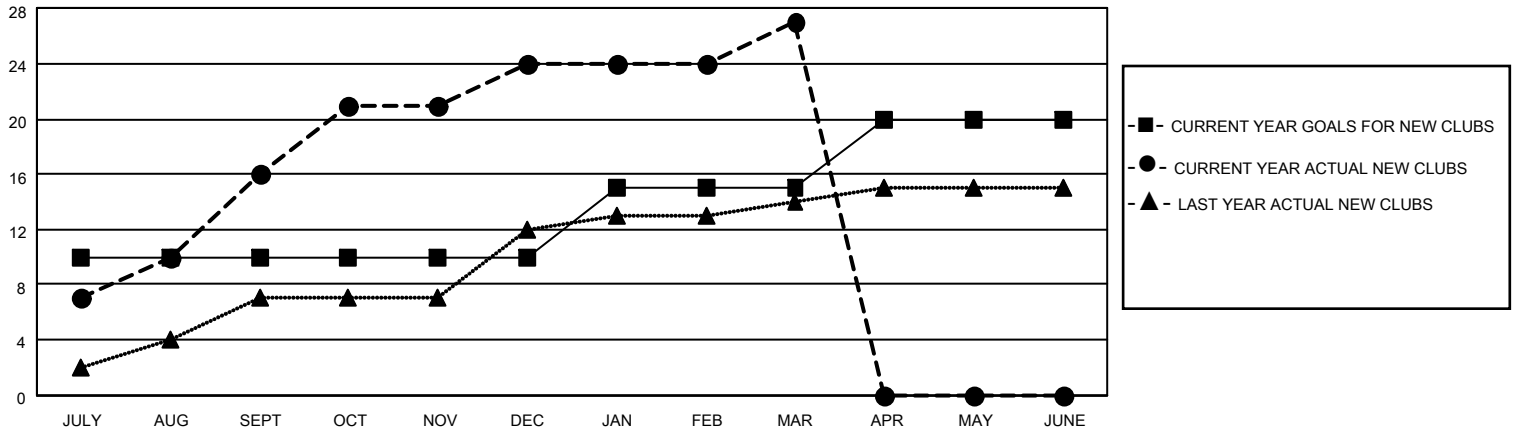
LOCATION NEPAL

GMT CA

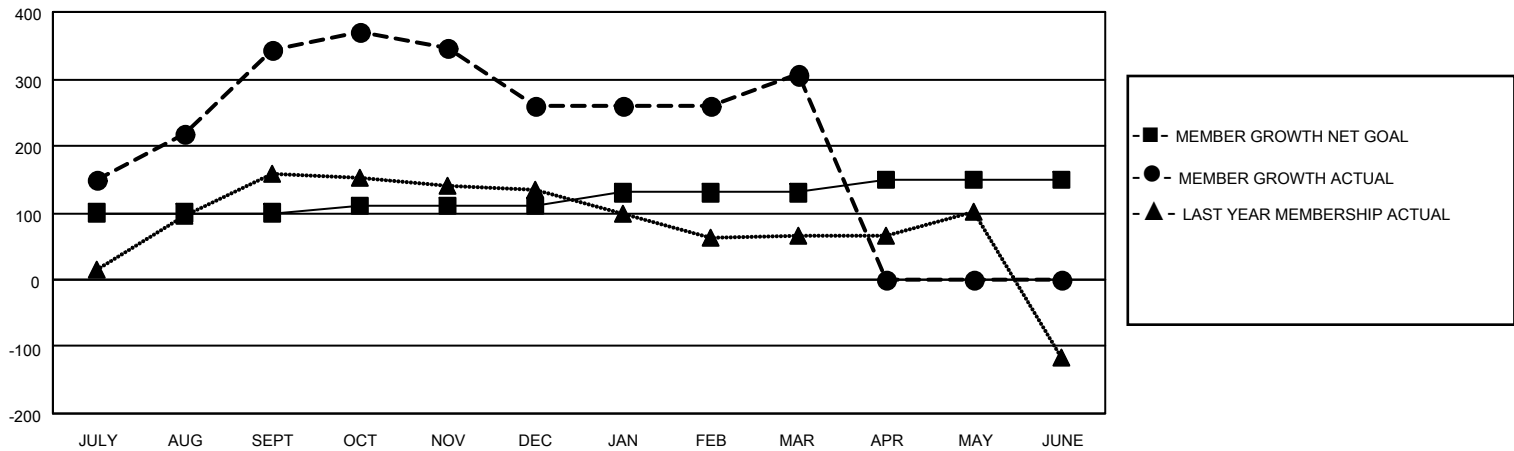
Clubs			
RESULTS FOR 2025-2026			
QUARTER	NEW CLUB GOAL	NEW CLUBS	DROPPED CLUBS
JULY/AUG/SEPT	10	16	1
OCT/NOV/DEC	0	8	0
JAN/FEB/MAR	5	3	0
APR/MAY/JUNE	5	0	0

Members			
RESULTS FOR 2025-2026			
QUARTER	MEMBER GROWTH NET GOAL	MEMBER GROWTH ACTUAL	DROPPED MEMBERS ACTUAL (including transfers)
JULY/AUG/SEPT	100	453	99
OCT/NOV/DEC	10	244	312
JAN/FEB/MAR	20	82	27
APR/MAY/JUNE	20	0	0

GOALS AND ACTUAL NEW CLUBS CUMULATIVE



GOALS AND ACTUAL MEMBERS CUMULATIVE



DROPPED CLUBS: 1 DROPPED MEMBERS DECEASED 1 CLUB CANCELLED 5 OTHER 431 TOTAL 437	85 CLUBS OF 157 ADDED 1 OR MORE NEW MEMBERS	GENDER DISTRIBUTION MALE 1,410 (66.17%) FEMALE 720 (33.79%)
	CLICK HERE FOR CUMULATIVE MEMBERSHIP DATA	TOTAL FAMILY UNIT MEMBERS 1,478 FAMILY MEMBERS PAYING HALF DUES 935